

Chevrolet's smart-styled Apache models, in Series 10, 20, 30 and 40, bring you the brand of thrift that has made the name "Chevrolet" mean economical transportation. From 47 models, ranging from 6½-foot Pickups to 12-foot Stakes, you can pick the one best truck for every light- and medium-duty requirement. With new four-wheel drive models, the Apache line now includes 13 pickups. Spacious panels come in two sizes, and versatile chassis-cabs are available in each series to meet every special-body requirement. Sleek, roomy Suburban Carryalls offer full passenger-car comfort for eight adults—and with rear seats removed, as much cargo space as a 7½-foot panel. In every model, Chevrolet's sensational combination of riding smoothness and working toughness adds up to the outstanding value in its class!



MODEL C4309 12-ft. STAKE



MODEL C3603 CHASSIS-CAB WITH SPECIAL VAN BODY



MODEL C1405 PANEL

# NEW LARGER 4-WHEEL DRIVE LINEUP

Three new long-wheelbase models in the 5,600-lb. GVW, K15 series expand Chevy's 4-wheel drive selection to 12 models. Including 8-foot Fleetside and Stepside pickups, and a chassis-cab model suitable for 8-foot special bodies, they add to the versatility of Chevy's traction-champ team. All feature extra-capacity, fully enclosed front axles, plus Chevy's smooth-working two-speed transfer case with single-lever drive selection. Dual power take-off openings permit driving a wide variety of front- or rear-mounted auxiliary equipment. For extra payload punch, V8 power is available at extra cost for all models.



MODEL K1534, 4WD FLEETSIDE PICKUP



MODEL K1406, 4WD CARRYALL

## TOTALLY NEW CORVAIR 95 MODELS

For 1961, Chevrolet has taken another giant step ahead of the industry, with three precedent-shattering Corvaire 95 models! They're totally new from road to roof, in concept, configuration and components, and they're built to handle more payload for their size and weight than any other trucks on the road! Body and frame are "unitized," combined in a single assembly, featuring high strength, low weight, and lots of load space. The years-ahead Corvaire 95 power team also reflects the unit design principle, combining engine, transmission and rear axle gearing in one package, tucked between the rear wheels. Further, Corvaire 95 proportions cradle the bulk of the cargo amidships, retaining near-perfect weight distribution whether empty or fully loaded. And coil springs cushion the ride at all four wheels, with fully independent suspension, front and rear, for handling no conventional chassis can match.



MODEL R1244 LOADSIDE PICKUP features an amazing 1,900-lb. payload capacity, with deep-well load floor boosting cubage to 80 cubic feet. Versatile three-section level load floor is optional at extra cost.

MODEL R1254 RAMPSIDE PICKUP offers unmatched ease for loading heavy objects. Rugged bridge-built cargo ramp provides level, no-lifting access to deep-well load-space. Ramp closes and latches securely flush with body side.



### SPECIFICATIONS

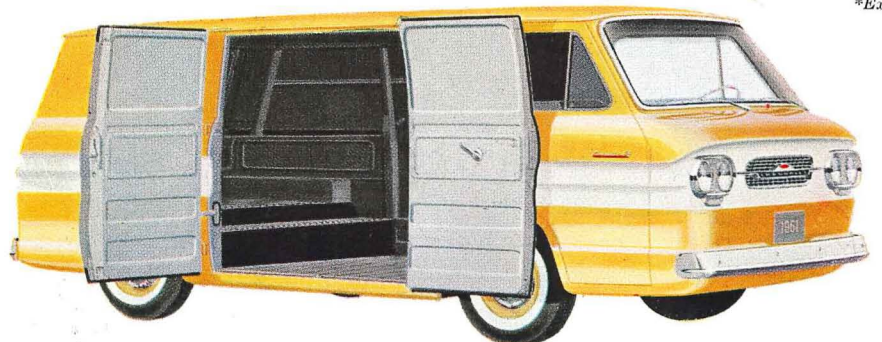
#### STANDARD EQUIPMENT

AXLE, REAR: Ratio 3.89.  
BRAKES: Hydraulic, front & rear 11" x 2"; lining area 167 sq. in.  
CLUTCH: 9½" diameter.  
DIRECTIONAL SIGNALS: Front & rear.  
ENGINE: Turbo-Air Six; 80 hp; 145-cu-in displacement.  
FUEL TANK: Capacity 18 gallons.  
GVW: 4,600 lb. maximum.  
SPRINGS, FRONT: Coil, capacity 1,150 lb. each.  
SPRINGS, REAR: Coil, capacity 1,150 lb. each.  
STEERING: Ball-gear, ratio 20.0.  
SUSPENSION, FRONT: Independent, capacity 2,500 lb.  
SUSPENSION, REAR: Independent, capacity 2,500 lb.  
TIRES: Five tubeless 7.00-14/4PR.  
TRANSMISSION: 3-speed synchro-mesh.  
WINDSHIELD WIPERS: Dual electric; single-speed.

#### OPTIONAL EQUIPMENT\*

BUMPERS, CHROMED: Front & rear.  
CUSTOM EQUIPMENT: Interior and exterior appearance, comfort and convenience features.  
DOORS, BODY: Left side for Corvan model.  
FLOOR, LEVEL PICKUP BOX: Pickups only.  
HEATER & DEFROSTER: Gasoline operated or direct air.  
HUB CAPS, CHROMED.  
PAINT, TWO-TONE EXTERIOR: Choice of 14 combinations.  
RADIO: Manual.  
SEAT: Full-width front for Corvan model.  
TIRES: 7.00-14/4PR whitewall; 7.00-14/6PR blackwall or whitewall.  
TRANSMISSIONS: 4-speed synchro-mesh (includes 3.27 rear axle ratio); Powerglide.  
WINDSHIELD WIPERS: 2-speed electric (includes washers).

\*Extra-cost.



MODEL R1205 CORVAN means good news for light-duty delivery van operators everywhere. Big right-side double doors offer curb-level, walk-in access to over 191 cubic feet of protected inside load-space. Wide-opening rear doors are standard and left-side double doors are optional at extra cost.



# 1961 VIKING MODELS

Economy Champs of the Middleweight Field!

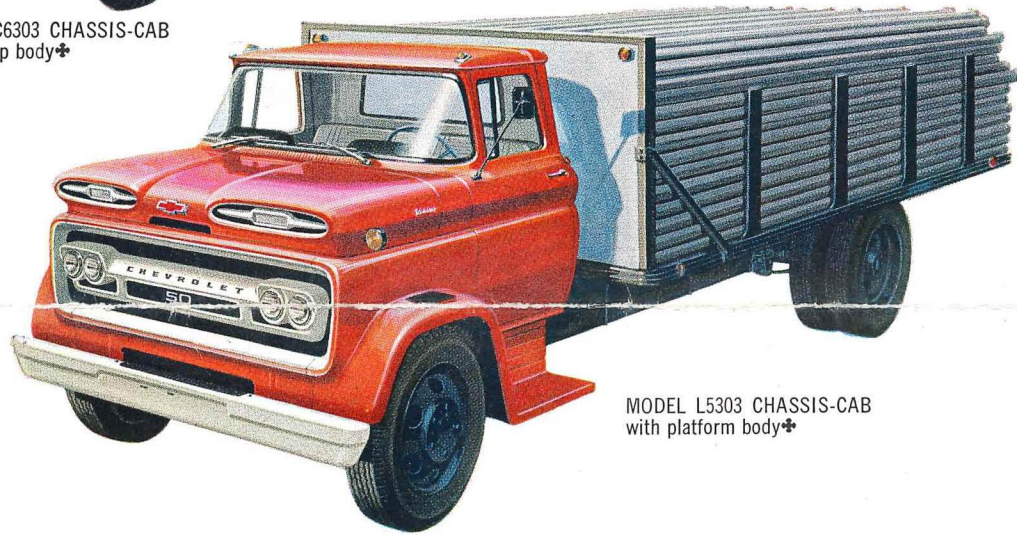
Chevrolet's lineup of 1961 Viking models brings you big-truck muscle at lowest cost. These middleweights make short work of toughest truck hauls. Offered in Series 50, 60 and 60-H models, the Viking line features extra-broad weight-class coverage, with maximum GVW's ranging from 16,000 to 22,000 lbs. All series offer both conventional and Low-Cab-Forward models, and for the ultimate in payload efficiency, Series 60 and 60-H also include Tilt Cabs. Economical 6-cylinder power is standard in every model—rugged 261-cubic-inch Jobmaster 6 in Series 60 and 60-H, and a special extra-duty Thriftmaster 6 in Series 50's. Powerful, efficient V8's are also available at extra cost for every Viking model.



MODEL C6303 CHASSIS-CAB with dump body\*



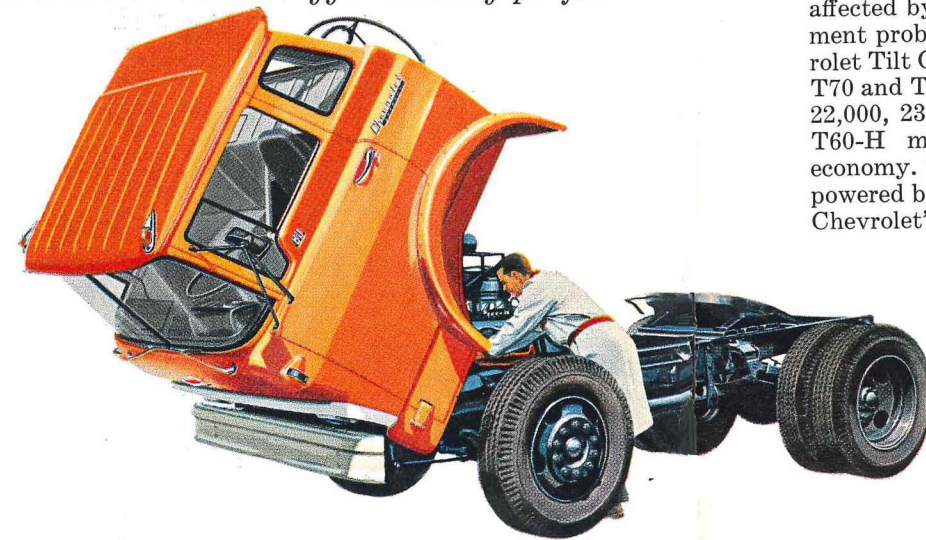
MODEL C6203-H CHASSIS-CAB with tractor equipment\*



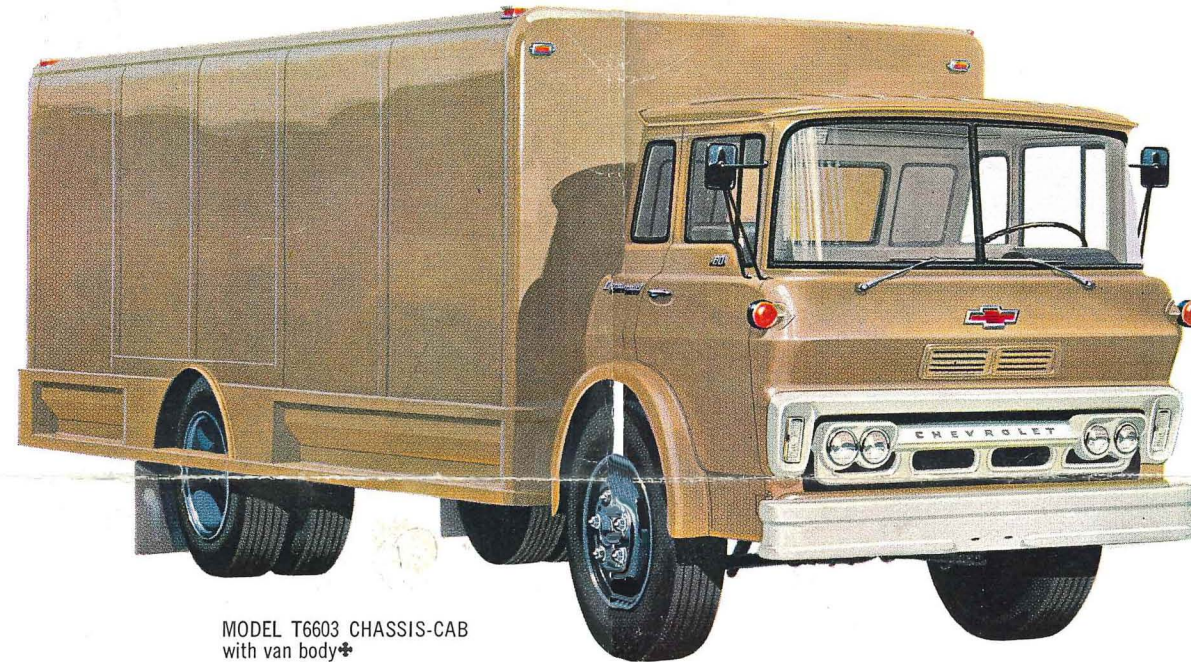
MODEL L5303 CHASSIS-CAB with platform body\*

# 1961 TILT CAB MODELS

The short route to bigger hauling profits



MODEL T8203 CHASSIS-CAB with tractor equipment\*

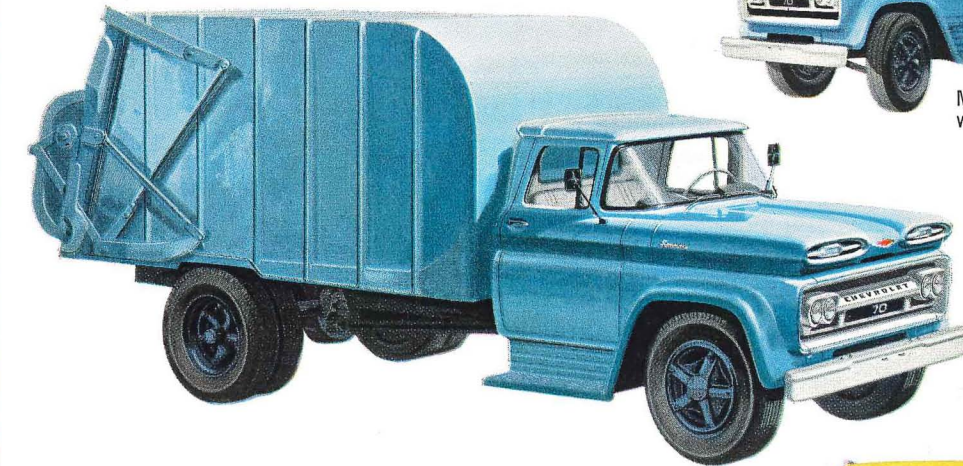


MODEL T6603 CHASSIS-CAB with van body\*

When it comes to making the most of a truck's working capacity Chevy Tilt Cabs are tops in payload efficiency. Tilt Cab design gives you short-wheelbase maneuverability—improved weight distribution and total engine accessibility. With Chevrolet's stationary control island, jointed steering column, and hydraulic clutch system, major driving controls are unaffected by cab tilting. Control linkage adjustment problems are virtually eliminated. Chevrolet Tilt Cabs are offered in Series T60, T60-H, T70 and T80, with maximum GVW's of 19,500, 22,000, 23,000 and 25,000 lbs. Series T60 and T60-H models feature standard 6-cylinder economy. The heavy-duty T70's and T80's are powered by big 348-cubic-inch V8's. All feature Chevrolet's Torsion-Spring Ride.

# 1961 SPARTAN MODELS

The Heavy-Duty Haulers with the History-Making Ride!



MODEL C7503 CHASSIS-CAB with refuse body\*



MODEL L7603 CHASSIS-CAB with milk tank body\*



MODEL C8303 CHASSIS-CAB with platform trailer\*

Chevy's 1961 Spartan line offers the best of the big ones, with 31 hard-muscled heavyweight models to choose from. The wide range of wheelbases fills the bill for every requirement, from close-coupled tractor duty up to 19½-foot body installations. Series 70 and 80 carry maximum GVW's of 23,000 and 25,000 lbs., each available in a full line of conventional cab, Low-Cab-Forward and Tilt Cab models. The M70 Tandem series, with conventional cab sheet metal, offers GVW's up to 36,000 lbs., to take the biggest jobs in stride. Standard in all Spartan models, Chevrolet's heavy-duty torsion-spring independent front suspension delivers ride and handling qualities without precedent in the big-truck field. Series 70 and 80 single-rear-axle models feature wide-range variable-rate rear suspensions. Series M70 Tandems are equipped with smooth-riding, true-tracking Eaton-Hendrickson tandem bogies. Big 348-cubic-inch V8's power all Spartan heavy-

weight models, with the 185-hp. Workmaster Special in Series 70's and the 230-hp. Workmaster in Series 80's and M70 tandems. Both are engineered and built throughout for the toughest heavy-duty hauls, with a big reserve of stay-on-the-job durability.

\*Body and/or vocational equipment are not the products of Chevrolet and are not intended to represent those of any manufacturer.

## SPECIFICATIONS

TYPE	SERIES C50 & L50				SERIES C60 & L60				SERIES C60-H & L60-H				SERIES T60		SERIES T60-H	
	Model	WB	CA/Body	Stoke	Model	WB	CA	Stoke	Model	WB	CA	Stoke	Model	WB	CA	Stoke
MODEL: WHEELBASE, CAB-AXLE OR BODY LENGTH	C5103 133" 60"	L5303 133" 72"	C6103 133" 60"	L6103 121" 60"	C6103-H 133" 60"	L6103-H 121" 60"			T6203 97"	77"	T6203-H 97"	77"				
GROSS WEIGHT RATINGS	GVW 14,000 lb. to 16,000 lb.				15,000 lb. to 19,500 lb.				15,000 lb. to 22,000 lb.				15,000 lb. to 19,500 lb.		15,000 lb. to 22,000 lb.	
AXLE, FRONT	Independent Suspension				Independent Suspension				Independent Suspension				Independent Suspension		Independent Suspension	
AXLE, REAR	Eaton 1618				Eaton 16800				Eaton 1618				Eaton 16800		Eaton 16800	
BRAKES, PARKING	Propeller Shaft				Propeller Shaft				Propeller Shaft				Propeller Shaft		Propeller Shaft	
BRAKES, SERVICE	15" x 4"				15" x 4"				15" x 4"				15" x 4"		15" x 4"	
ENGINE	Thriftmaster 6-Cyl.				Jobmaster 6-Cyl.				Jobmaster 6-Cyl.				Jobmaster 6-Cyl.		Jobmaster 6-Cyl.	
FUEL TANK	18½ Gallons				18½ Gallons				18½ Gallons				18 Gallons		18 Gallons	
GENERATOR	12, 35, 12, 40, 12, 50 (Low Cut-In)				12, 35, 12, 40, 12, 50 (Low Cut-In)				12, 35, 12, 40, 12, 50 (Low Cut-In)				12, 35, 12, 40, 12, 50 (Low Cut-In)		12, 35, 12, 40, 12, 50 (Low Cut-In)	
SHOCK ABSORBERS	Front				Front				Front				Front		Front	
SPRINGS, FRONT	Torsion				Torsion				Torsion				Torsion		Torsion	
SPRINGS, REAR	Variable Rate, 59" x 3"				Variable Rate, 59" x 3"				Variable Rate, 59" x 3"				Variable Rate, 59" x 3"		Variable Rate, 59" x 3"	
STEERING	Ball-Gear Ratio, Wheel Dia.				Ball-Gear Ratio, Wheel Dia.				Ball-Gear Ratio, Wheel Dia.				Ball-Gear Ratio, Wheel Dia.		Ball-Gear Ratio, Wheel Dia.	
TIRES, FRONT & DUAL REAR	8-22.5/8PR Tubeless				8-22.5/8PR Tubeless				8-22.5/8PR Tubeless				8-22.5/8PR Tubeless		8-22.5/8PR Tubeless	
TRANSMISSION	Chevrolet				Chevrolet				Chevrolet				Chevrolet		Chevrolet	
WHEELS	5-Stub Disc, Front; 10-Stub Disc, Rear				5-Stub Disc, Front; 10-Stub Disc, Rear				5-Stub Disc, Front; 10-Stub Disc, Rear				5-Stub Disc, Front; 10-Stub Disc, Rear		5-Stub Disc, Front; 10-Stub Disc, Rear	

## SPECIFICATIONS

TYPE	SERIES C70 & L70				SERIES T70				SERIES C80 & L80				SERIES T80		SERIES M70	
	Model	WB	CA	Stoke	Model	WB	CA	Stoke	Model	WB	CA	Stoke	Model	WB	CA	Stoke
MODEL: WHEELBASE, CAB-AXLE	C7103 133" 60"	L7103 121" 60"	T7203 97"	77"	C8103 133" 60"	L8103 121" 60"	T8203 97"	77"	M7303 157"	60"	M7303 157"	60"	M7303 157"	60"	M7303 157"	60"
GROSS WEIGHT RATINGS	GVW 15,000 lb. to 23,000 lb.				15,000 lb. to 23,000 lb.				18,500 lb. to 25,000 lb.				18,500 lb. to 25,000 lb.		24,000 lb. to 36,000 lb.	
AXLE, FRONT	Independent Suspension				Independent Suspension				Independent Suspension				Independent Suspension		Independent Suspension	
AXLE, REAR	Eaton 1618				Eaton 16800				Eaton 1790A				Eaton 17800		(2) Eaton Series 30D	
BRAKES, PARKING	Propeller Shaft				Propeller Shaft				Propeller Shaft				Propeller Shaft		Propeller Shaft	
BRAKES, SERVICE	15" x 3"				15" x 3"				15" x 3"				15" x 3"		15" x 3"	
ENGINE	Workmaster Special V8				Workmaster Special V8				Workmaster V8				Workmaster V8		Workmaster V8	
FUEL TANK	20½ Gallons				18 Gallons				20½ Gallons				18 Gallons		20½ Gallons	
GENERATOR	12, 35, 12, 40, 12, 50 (Low Cut-In)				12, 35, 12, 40, 12, 50 (Low Cut-In)				12, 35, 12, 40, 12, 50 (Low Cut-In)				12, 35, 12, 40, 12, 50 (Low Cut-In)		12, 35, 12, 40, 12, 50 (Low Cut-In)	
SHOCK ABSORBERS	Front				Front				Front				Front		Front	
SPRINGS, FRONT	Torsion				Torsion				Torsion				Torsion		Torsion	
SPRINGS, REAR	Variable Rate, 59" x 3"				Variable Rate, 59" x 3"				Variable Rate, 59" x 3"				Variable Rate, 59" x 3"		Hendrickson RT320	
STEERING	Ball-Gear Ratio, Wheel Dia.				Ball-Gear Ratio, Wheel Dia.				Ball-Gear Ratio, Wheel Dia.				Ball-Gear Ratio, Wheel Dia.		Ball-Gear Ratio, Wheel Dia.	
TIRES, FRONT & DUAL REAR	8-22.5/8PR Tubeless				8-22.5/8PR Tubeless				8-22.5/8PR Tubeless				8-22.5/8PR Tubeless		8-22.5/8PR Tubeless	
TRANSMISSION	Chevrolet				Chevrolet				Chevrolet				Chevrolet		Chevrolet	
WHEELS	5-Stub Disc, Front; 10-Stub Disc, Rear				5-Stub Disc, Front; 10-Stub Disc, Rear				5-Stub Disc, Front; 10-Stub Disc, Rear				5-Stub Disc, Front; 10-Stub Disc, Rear		5-Stub Disc, Front; 10-Stub Disc, Rear	

EQUIPMENT SHOWN IN LIGHT FACE ITALICS OPTIONAL AT EXTRA COST. \* Cooling capacities shown are for models with synchro-mesh transmissions. † Available with 7000 lb. front suspension only. ‡ Auxiliary rear springs available as necessary item. ‡ Auxiliary rear springs available as necessary item. ‡ Auxiliary rear springs available as necessary item.



1961

# FORWARD CONTROL AND SCHOOL BUS MODELS

Handy, Multi-Stop, Forward Control Models, Plus a Full Line of Stronger, Safer, Smoother Riding School Bus Chassis.

Six spacious Chevrolet Step-Van models for '61 come fully equipped, ready to roll, with built-right all-steel bodies in 8-, 10- and 12-foot lengths and maximum GVW's of 7,000 and 10,000 lbs. In addition, tough Chevrolet Forward Control chassis are available separately, in the same wheelbases and GVW's, to accommodate bodies of all leading manufacturers.

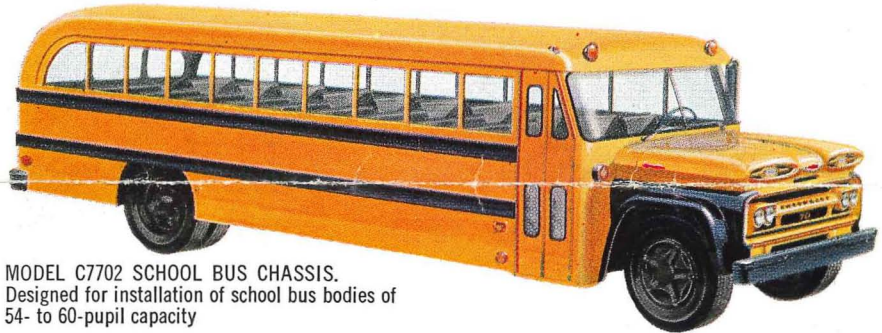
Chevrolet's school bus lineup for 1961 includes six chassis-cowl models ranging up to 261½ inches in wheelbase, plus the eight-passenger Suburban Carryall. Chassis-cowl models are built to carry bus bodies of from 30- to 66-pupil capacity. Big, sure brakes, extra frame strength and plenty of power safely handle big capacity loads. School bus chassis models are offered in Series S50, S60 and S70, with GVW's from 10,500 to 23,000 lbs. All are built and equipped to national school bus standards. A wide variety of optional equipment permits meeting specific local requirements at lowest cost.



MODEL P2545 FORWARD CONTROL CHASSIS with Chevrolet's 10-ft. Step-Van body



MODEL C1416 CARRYALL with capacity for driver and up to 8 pupils



MODEL C7702 SCHOOL BUS CHASSIS. Designed for installation of school bus bodies of 54- to 60-pupil capacity

SPECIFICATIONS

TYPE	SERIES P20				SERIES P30				SERIES 550			SERIES 562 & 564			SERIES 567			SERIES 577 & 579					
	Forward Control				Forward Control				School Bus			School Bus			School Bus			School Bus					
MODEL; TYPE; WB (in.) and/or BODY LENGTH	Model	Type	WB	Body	Model	Type	WB	Body	Model	Type	WB	Model	Type	WB	Model	Type	WB	Model	Type	WB			
	P2342	Chassis	104	—	P3342	Chassis	104	—	S5302	Chassis-Cowl	157	S6202	Chassis-Cowl	197	S6702	Chassis-Cowl	243	S7702	Chassis-Cowl	243			
	P2345	Step-Van	104	8'	P3345	Step-Van	104	8'				S6402	Chassis-Cowl	225½				S7902	Chassis-Cowl	261½			
	P2542	Chassis	125	—	P3542	Chassis	125	—															
	P2545	Step-Van	125	10'	P3545	Step-Van	125	10'															
	P2642	Chassis	137	—	P3642	Chassis	137	—															
	P2645	Step-Van	137	12'	P3645	Step-Van	137	12'															
GROSS WEIGHT RATINGS	GVW 5600 lb. to 7000 lb.				7500 lb. to 10,000 lb.				10,500 lb. to 16,000 lb.			15,000 lb. to 21,000 lb.			15,000 lb. to 21,000 lb.			15,000 lb. to 23,000 lb.					
PUPIL CAPACITY, SCHOOL BUS									30 to 36 Pupils			42 to 48 (S6202) 48 to 54 (S6402)			54 to 60 Pupils			54 to 60 (S7702) 60 to 66 (S7902)					
AXLE, FRONT	Type I-Beam Rating 4000 lb.				Type I-Beam Rating 4000 lb.				Independent Suspension 5000 lb.			Independent Suspension 5500 lb. 7000 lb.			Independent Suspension 5500 lb. 7000 lb.			Independent Suspension 7000 lb.					
AXLE, REAR	Make & Model Chevrolet Rating 5200 lb. Ratio 5.14 to 1				Make & Model Chevrolet Rating 7200 lb. Ratio 5.14 to 1				Chevrolet 13,500 lb. 15,000 lb. 6.60 to 1 6.40/8.72 to 1; 2-Spd.			Chevrolet 13,500 lb. 15,000 lb. 6.60 to 1 7.20 to 1 6.40/8.72 to 1			Chevrolet 15,000 lb. 7.20 to 1 6.40/8.72 to 1; 2-Spd.			Chevrolet Eaton 1618 Eaton 16800 15,000 lb. 16,000 lb. 16,000 7.20 6.40/8.72 7.17 to 1 6.50/9.04					
BRAKES, PARKING	Location Rear Wheels				Propeller Shaft				Propeller Shaft			Propeller Shaft			Propeller Shaft			Propeller Shaft					
BRAKES, SERVICE	Size Front 12" x 2" Size Rear 12" x 2" Total Lining Area 185 Sq. In. Booster 7" Hydovac				Size Front 12" x 2" Size Rear 13" x 2½" Total Lining Area 225 Sq. In. Booster 7" Hydovac				Size Front 14" x 2½" Size Rear 15" x 4" Total Lining Area 381 Sq. In. Booster 11" Diaphragm			Size Front 14" x 2½" Size Rear 15" x 4" Total Lining Area 381 Sq. In. 385 Sq. In. Booster 11" Diaphragm			Size Front 14" x 2½" Size Rear 15" x 4" Total Lining Area 385 Sq. In. 448 Sq. In. Booster 11" Diaphragm			Size Front 14" x 2½" Size Rear 15" x 4" Total Lining Area 448 Sq. In. 579 Sq. In. Booster 11" Diaphragm					
ENGINE	Type Thriftmaster Special 6-Cyl. Displacement 235.5 Cu. In. Gross Horsepower 135 Gross Torque 217 Ft.-lb. Clutch Dia.; Facing Area 11"; 124 Sq. In. Cooling Capacity 17 Qt.				Type Thriftmaster Special 6-Cyl. Displacement 235.5 Cu. In. Gross Horsepower 135 Gross Torque 217 Ft.-lb. Clutch Dia.; Facing Area 11"; 124 Sq. In. Cooling Capacity 17 Qt.				Type Thriftmaster 6-Cyl. Trademaster V8 Displacement 235.5 Cu. In. 283 Cu. In. Gross Horsepower 135 160 Gross Torque 217 Ft.-lb. 270 Ft.-lb. Clutch Dia.; Facing Area 11"; 124 Sq. In. 11"; 124 Sq. In. Cooling Capacity 17 Qt. 17½ Qt. 18 Qt. 18½ Qt.			Type Jobmaster 6-Cyl. Taskmaster V8 Displacement 261 Cu. In. 283 Cu. In. Gross Horsepower 150 185 Gross Torque 235 Ft.-lb. 270 Ft.-lb. Clutch Dia.; Facing Area 11"; 124 Sq. In. 11"; 124 Sq. In. Cooling Capacity 17 Qt. 17½ Qt. 18 Qt. 18½ Qt.			Type Jobmaster 6-Cyl. Taskmaster V8 Work. Spec. V8 Displacement 261 Cu. In. 283 Cu. In. 348 Cu. In. Gross Horsepower 150 185 Gross Torque 235 Ft.-lb. 270 Ft.-lb. 315 Ft.-lb. Clutch Dia.; Facing Area 11"; 124 Sq. In. 11"; 124 Sq. In. 13"; 178 Sq. In. Cooling Capacity 17 Qt. 17½ Qt. 18 Qt. 18½ Qt. 30 Qt. 31 Qt.			Type Workmaster Special V8 Displacement 348 Cu. In. Gross Horsepower 185 Gross Torque 315 Ft.-lb. Clutch Dia.; Facing Area 13"; 178 Sq. In. Cooling Capacity 30 Qt. 31 Qt.					
FRAME	Side Rail Dimensions; Sec. Mod. Wheelbase: 104" - 137" 157" 197" 225½" - 261½"				7¼" x 2¾" x ½"; 5.70				9½" x 2½" x ½"; 11.28			9½" x 3½" x ½"; 15.21 9½" x 3½" x ½"; 16.43			9¼" x 3½" x ½"; 16.43			9¼" x 3½" x ½"; 16.43					
FUEL TANK	Capacity 15½ (Series P23) ★ 18 (Series P25 & P26)				15½ (Series P33) ★ 18 (Series P35 & P36)				30 Gal.			30 Gal.			30 Gal.			30 Gal.					
GENERATOR	Volts; Amps 12; 30 12; 35 12; 40 12; 50 ▲				12; 30 12; 35 12; 40 12; 50 ▲				12; 30 12; 35 12; 40 12; 50 ▲			12; 30 12; 35 12; 40 12; 50 ▲			12; 30 12; 35 12; 40 12; 50 ▲			12; 30 12; 35 12; 40 12; 50 ▲					
SHOCK ABSORBERS	Front & Rear				Front & Rear				Front Rear			Front Rear			Front Rear			Front Rear					
SPRINGS, FRONT	Type Leaf; 44" Long x 2" Wide Cap. at Ground 2000 lb. (8-leaf)				Type Leaf; 44" Long x 2" Wide Cap. at Ground 2000 lb. (8-leaf) 2500 lb. (10-leaf)				Type Torsion 2500 lb. 3000 lb.			Type Torsion 2500 lb. 3000 lb.			Type Torsion 3000 lb. 3500 lb.			Type Torsion 3000 lb. 3500 lb.					
SPRINGS, REAR	Type; Length & Width Leaf; 52" x 2½" No. of Leaves; Cap. at Ground 8; 2400 lb.				Type; Length & Width Leaf; 52" x 2½" No. of Leaves; Cap. at Ground 8; 2400 lb. 8 Main; 5 Aux.; 3450 lb.				Type Variable Rate; 59" x 3" 9; 7500 lb. 9; 9200 lb.			Type Variable Rate; 59" x 3" 9; 7500 lb. 9; 9200 lb.			Type Variable Rate; 59" x 3" 9; 9200 lb. 10; 10,400 lb.			Type Variable Rate; 59" x 3" 9; 9200 lb. 10; 10,400 lb.					
STEERING	Ball-Gear Ratio; Wheel Dia. 27.8 to 1; 18"				27.8 to 1; 18"				28.1 to 1; 19"			28.1 to 1; 19"			28.1 to 1; 19"			28.1 to 1; 19"					
TIRES	Standard 7-17.5/6PR Front & Single Rear Maximum 8-17.5/8PR Front & Single Rear				8-19.5/6PR Front & Single Rear 8-19.5/8PR Front & Dual Rear				7-22.5/6PR Front & Dual Rear 9-22.5/10PR Front & Dual Rear			8-22.5/8PR Front & Dual Rear 10-22.5/10PR Front & Dual Rear			8-22.5/8PR Front & Dual Rear 10-22.5/10PR Front & Dual Rear			8-22.5/8PR Front & Dual Rear 10-22.5/10PR Front & Dual Rear					
TRANSMISSION	Make & Model Chevrolet Type Synchro HD Synchro Synchro Hydra-Matic No. of Speeds 3 3 4 4				Make & Model Chevrolet Type Synchro HD Synchro Hydra-Matic No. of Speeds 4 3 4				Make & Model Chevrolet Type Synchro No. of Speeds 4			Make & Model Chevrolet New Process 540C Chevrolet Type Synchro Synchro Powermatic No. of Speeds 4 5 6			Make & Model Chevrolet New Process 540C Chevrolet Type Synchro Synchro Powermatic No. of Speeds 4 5 6			Make & Model Clark 265V Chevrolet Type Synchro Powermatic No. of Speeds 5 6			Make & Model Chevrolet Type Powermatic No. of Speeds 6		
WHEELS	Type 8-Stud Disc Std. Rim Size; Max. Rim Size 5.25"; 5.25"				Type 8-Stud Disc 5.25"; 5.25"				Type Disc (5-Stud Front, 10-Stud Rear) 5.25"; 6.75"			Type Disc (5-Stud Front, 10-Stud Rear) Cast 6.00"; 6.75"			Type Disc (5-Stud Front, 10-Stud Rear) Cast 6.00"; 6.75"			Type Cast Budd 10-Stud Disc 6.00"; 7.50"					

EQUIPMENT SHOWN IN LIGHT FACE ITALICS OPTIONAL AT EXTRA COST

▲ Cooling capacities shown are for models with synchro-mesh transmissions. Additional cooling capacity provided with Powermatic transmission.

★ Power Steering optional at extra cost on Series S60 and S70 School Buses. ★ 30-gallon fuel tank available on Series P25, P26, P35 and P36.

▲ Low cut-in type

✦ Available with 4-speed synchro-mesh transmission.

All illustrations and specifications contained in this literature are based on the latest product information available at the time of publication. The right is reserved to make changes at any time in prices, colors, materials, equipment, specifications and models, and also to discontinue models.

CHEVROLET MOTOR DIVISION OF GENERAL MOTORS CORPORATION, DETROIT 2, MICHIGAN

Printed in U.S.A. October, 1960