

# A NEW WORLD OF WORTH!



## 1962 CHEVROLET LIGHT-DUTY TRUCKS WHEN PURCHASED...ON THE JOB...WHEN TRADED...“WORLDS” APART!

### CAB COMFORT, CONVENIENCE

	CHEVROLET	FORD
Door Checks .....	Yes	No
Turn Signals .....	Standard	Extra-Cost
Door Width .....	40.625"	37.48"
Seat Width .....	59.5"	56.75"
Hiproom .....	67.0"	63.42"
Shoulder Room .....	63.0"	60.10"
Seat Height, from Floor .....	15.0"	12.84"
Seat Back Rest Springs .....	Coil	"Formed Wire"
Roof, Door, Box Construction .....	Double-Wall	Single-Wall
Insulation, Seal-Type .....	Closed-Cell	Open-Cell
Non-Glare Instrument Panel Finish .....	Yes	No

**ALL CONVENTIONAL, LCF CHEVROLET CABS IN ALL WEIGHT CLASSES HAVE ALL THESE FEATURES**

# WORLD S

## PICKUPS

### LOAD-SUPPORTING ABILITY

	CHEVROLET			FORD		
	C10	C20	C30	F-100	F-250	F-350
Maximum GVW Rating (Lbs.)	5,200	7,500	7,800	5,000	7,400	7,800
Front-Suspension Type	IFS			Leaf Spring		
Rear-Spring Type	Coil	Coil	Leaf	Leaf	Leaf	Leaf
Std. Front Spring Capacity (Pad-Lbs.)	1,050	1,050	1,300	1,000	1,100	1,150
Std. Rear Spring Capacity (Pad-Lbs.)	1,080	1,650	1,920	1,025	1,450	2,000
Std. Rear Axle Capacity (Lbs.)	3,500	5,200	7,200	3,300	5,000	7,200

### LOAD-MOVING ABILITY

Std. Engine Net Horsepower	115			114		
Std. Engine Net Torque (Ft.-Lbs.)	195			186		
Maximum Economy Option Available	Yes			No		
Optional Six Engine	261			None		
Optional V8 Net Horsepower	137			135		
Optional V8 Net Torque (Ft.-Lbs.)	250			245		
Std. Clutch Lining Area (Sq. In.)	100			85.5	85.5	124
Std. Brakes (C-10, F-100)	F. 11" x 2" R. 11" x 2"			F. 11" x 2" R. 11" x 1.75"		
Std. Brakes (C20, F-250)	F. 11" x 2.75" R. 11" x 2.75"			F. 12.125" x 2" R. 12.125" x 2"		
Std. Brakes (C30, F-350)	F. 11" x 2.75" R. 13" x 2.5"			F. 12.125" x 2" R. 13" x 2.5"		
Std. Lining Area (Sq. In.)	167	239	252	169	209	238

### LOADING HEIGHT FROM GROUND

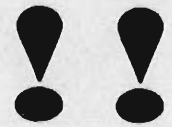
Side, 6½' Body (C10 Fleetside, F-100 Styleside)	46.73"	50.4"
Side, 8' Body (C10 Fleetside, F-100 Styleside)	46.64"	50.8"
Rear, 6½' Body, Gate Down (C10 Fleetside, F-100 Styleside)	27.61"	30.8"
Rear, 8' Body, Gate Down (C10 Fleetside, F-100 Styleside)	27.52"	31.2"
Separate Cab/Body Design (Conventional Fleet-side, Styleside Pickups)	Yes	No

Four-Wheel Drive Models	12	8
Panels, Carryalls	4	None

**CHEVROLET**

**WORTH MORE ON THE JOB . . .**

# A PART



## CAB COMFORT, CONVENIENCE

	CORVAIR 95 PICKUP	ECONOLINE VAN, PICKUP
Hiproom.....	61.4"	42.98"
Shoulder Room.....	59.5"	61.7"
Headroom.....	39.7"	35.91"
Seats for.....	Three	Two
Engine Location.....	Rear	Front
Non-Glare Instrument Panel.....	Yes	No
Door Checks.....	Yes	No
"Walk-through" Doors Offered (Van).....	Yes	No

## LOAD-SUPPORTING ABILITY

Maximum GVW Rating (Lbs.).....	4,600	4,350
Front, Rear Spring Type.....	Coil	Leaf
Independent Suspension Throughout.....	Yes	No
Front-Rear Load Weight Distribution (Van).....	47-53%	17.2-82.8%
Front-Rear Load Weight Distribution (Pickup).....	47-53%	15.6-84.4%
Front Spring Capacity (Pad) (Lbs.).....	1,040	855
Rear Spring Capacity (Pad) (Lbs.).....	1,050	940
Rear Axle Capacity (Lbs.).....	2,500	2,300
Std. Tires.....	7.00-14/4PR	6.50-13/4PR
Tire Capacity, Each (Lbs.).....	975	835
Rim Width.....	5"	4.5"
Total Glass Area (Van—Sq. In.).....	2,479	2,184

## LOAD-MOVING ABILITY

Std. Transmission.....	3-Sp. Manual	3-Sp. Manual
Optional Transmissions Available.....	2	None
Limited-Slip Rear Axle Available.....	Yes	No
Std. Clutch Lining Area (Sq. In.).....	72	67.6
Brakes, Front.....	11" x 2"	10" x 2.5"
Brakes, Rear.....	11" x 2"	10" x 1.75"
Brake Lining Area (Sq. In.).....	167	144

**CHEVROLET**

**WORTH MORE WHEN TRADED IN**

# "WORLDS" APART!

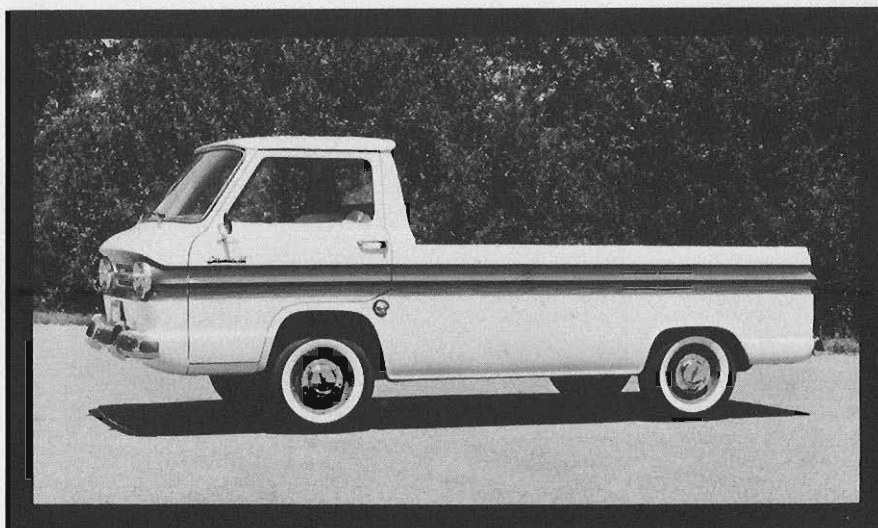
## LOADING HEIGHT FROM GROUND

	CORVAIR 95 VAN, PICKUP	ECONOLINE VAN, PICKUP
Side (Van).....	16.25"	22.2"
Side (Pickup—Rampside) (Pickup).....	16.25"	44.9"
Rear, Gate Down.....	29.0"	29.5"
Window in Rear Doors (Van).....	Standard	Extra-Cost
Side Door Height, Width (Van).....	51.08" x 53"	48.3" x 49.2"

## A NEW WORLD OF WORTH!

### WORTH MORE WHOLESALE, AT AUCTIONS!

Chevrolet 1/2-, 3/4-Ton Pick-  
ups Worth MORE Than Ford  
Pickups: 1961—\$25-\$50 • 1960—  
\$25 • 1959—\$50-\$75 • 1958—\$25-  
\$50 • 1957—\$25-\$50



## A NEW WORLD OF WORTH! WITH 1962 CHEVROLET TRUCKS!

- ☆ Worth **More** Comfort, Convenience!
- ☆ Worth **More** Load-Supporting Ability!
- ☆ Worth **More** Load-Moving Ability!
- ☆ Worth **More** Easier Loading, Unloading!
- ☆ Worth **More** When Traded In!

CHEVROLET MOTOR DIVISION  
GENERAL MOTORS CORPORATION  
DETROIT 2, MICHIGAN