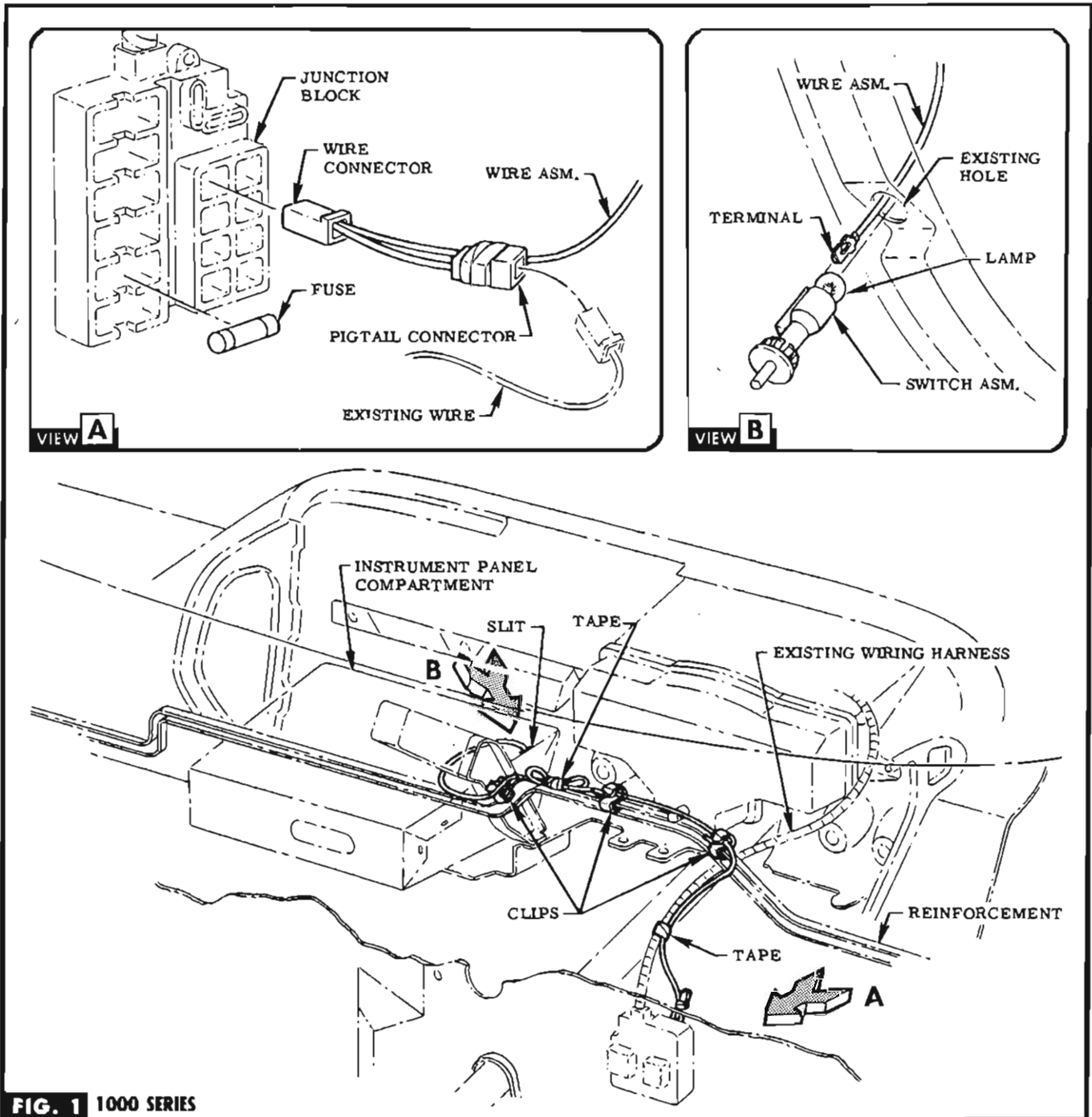


988456 GLOVE COMPARTMENT LIGHT SWITCH INSTRUCTION SHEET

PASSENGER, R-10 AND TRUCK



STEP 1 ROUTE WIRE TERMINAL THRU SLIT IN UPPER LEFT HAND CORNER OF INSTRUMENT PANEL COMPARTMENT & THRU HOLE IN UPPER LEFT SIDE OF COMPARTMENT OPENING. SEE FIG. 1 & VIEW B.

STEP 2 ASSEMBLE WIRE TERMINAL TO SWITCH. INSERT LAMP & PRESS SWITCH INTO POSITION. SEE VIEW B.

STEP 3 ROUTE WIRE ALONG REINFORCEMENT & ATTACH WITH THREE OF PROVIDED CLIPS. ROUTE WIRE WITH EXISTING HARNESS TO JUNCTION BLOCK. TAPE WIRE TO

HARNESS CLOSE TO JUNCTION BLOCK. SEE FIG. 1.

STEP 4 PLUG WIRE CONNECTOR INTO EITHER RECEPTACLE MARKED "CTSY." SEE VIEW A. **NOTE** If receptacle is occupied, remove existing wire & connect to jumper wire.

STEP 5 INSERT FUSE INTO RECEPTACLE MARKED "TAIL-LPS." SEE VIEW A.

STEP 6 LOOP EXCESS WIRE & TAPE. SEE FIG. 1.
NOTE Discard remaining parts.

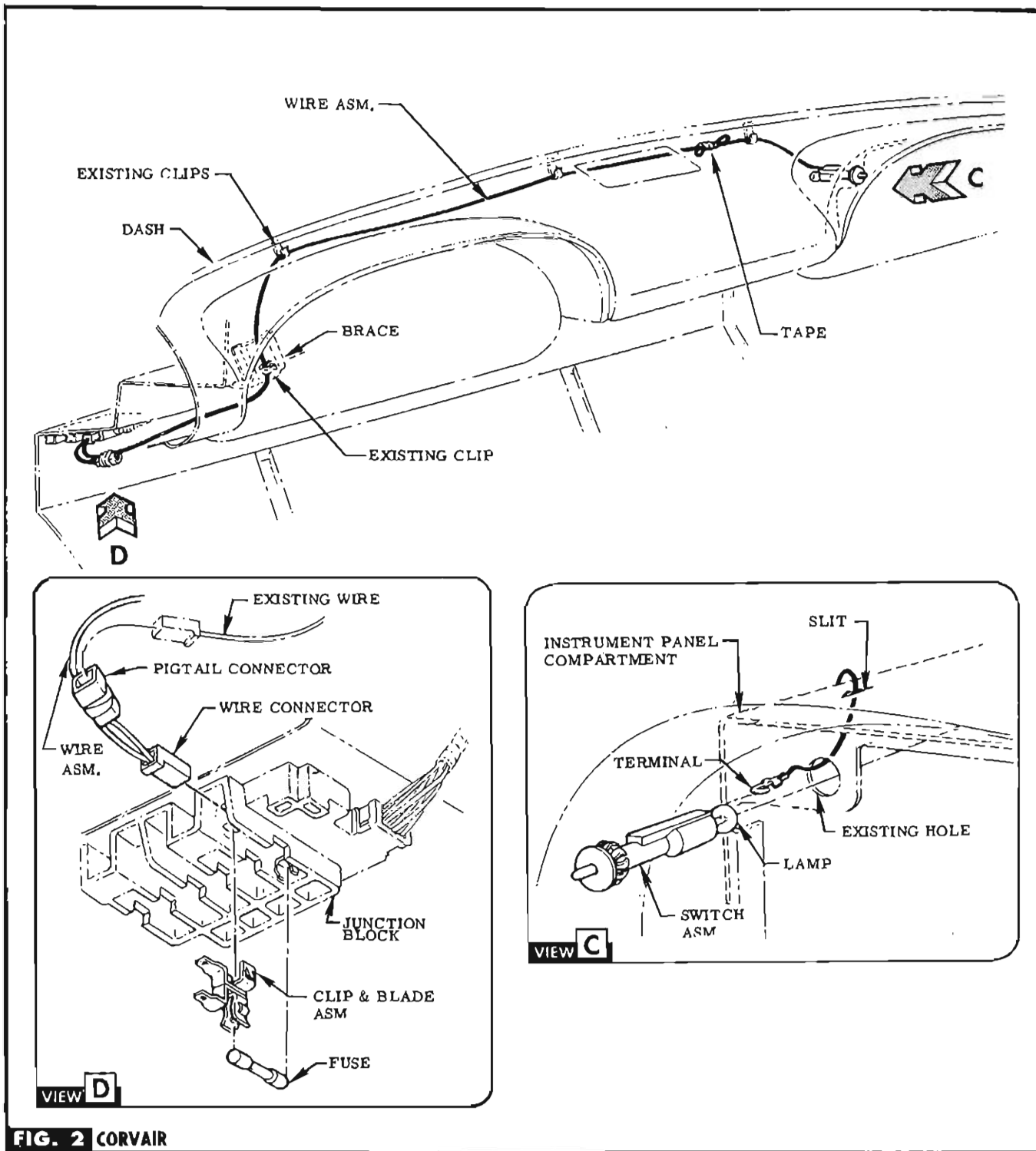


FIG. 2 CORVAIRE

STEP 1a ROUTE WIRE TERMINAL THRU SLIT IN UPPER LEFT HAND CORNER OF INSTRUMENT PANEL COMPARTMENT & THRU HOLE IN UPPER LEFT SIDE OF COMPARTMENT OPENING. SEE FIG. 2 & VIEW C.

STEP 2a ASSEMBLE WIRE TERMINAL TO SWITCH. INSERT LAMP & PRESS SWITCH INTO POSITION. SEE VIEW C.

STEP 3a ROUTE WIRE THRU EXISTING CLIPS (ON DASH) TO

JUNCTION BLOCK. SEE FIG. 2.

STEP 4a PRESS CLIP & BLADE INTO RECEPTACLE MARKED "GL. BOX LP.", INSERT FUSE & CONNECT WIRE. SEE VIEW D. **NOTE** If receptacle is occupied, remove existing wire & connect to jumper wire. Discard clip & blade asm. & fuse.

STEP 5a LOOP & TAPE EXCESS WIRE. SEE FIG. 2.

NOTE Discard the clips provided, they are for other model.

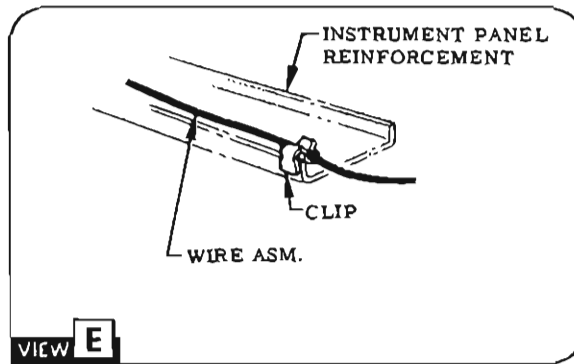
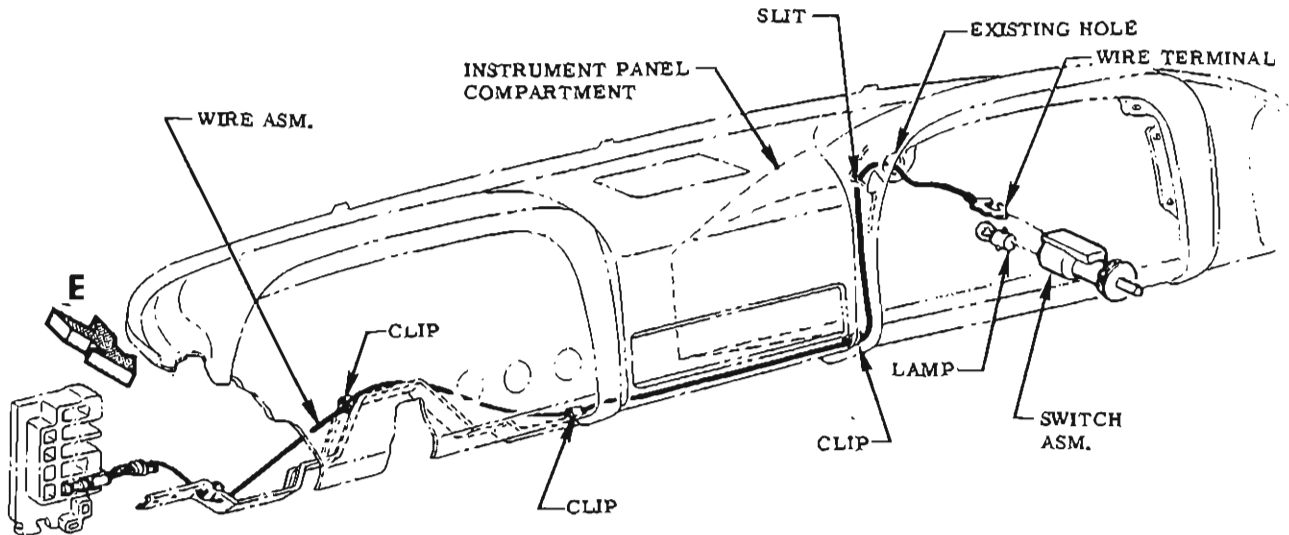


FIG. 3 C-K-L-M SERIES TRUCK

STEP 1b ROUTE WIRE TERMINAL THRU SLIT IN UPPER LEFT HAND CORNER OF INSTRUMENT PANEL COMPARTMENT & THRU HOLE IN UPPER LEFT SIDE OF COMPARTMENT OPENING. SEE FIG. 3.

STEP 2b ASSEMBLE WIRE TERMINAL TO SWITCH. INSERT LAMP & PRESS SWITCH INTO POSITION. SEE FIG. 3.

STEP 3b MOUNT CLIPS ON THE FORWARD FLANGE OF

INSTRUMENT PANEL REINFORCEMENT & ROUTE WIRE THRU THESE CLIPS TO JUNCTION BLOCK. SEE FIG. 3, & VIEW E.

STEP 4b PRESS CLIP & BLADE INTO RECEPTACLE MARKED "GL. BOX LP.", INSERT FUSE & CONNECT WIRE. SEE VIEW D, FIG. 2. **NOTE** If receptacle is occupied, remove existing wire & connect to jumper wire. Discard clip & blade asm. & fuse.

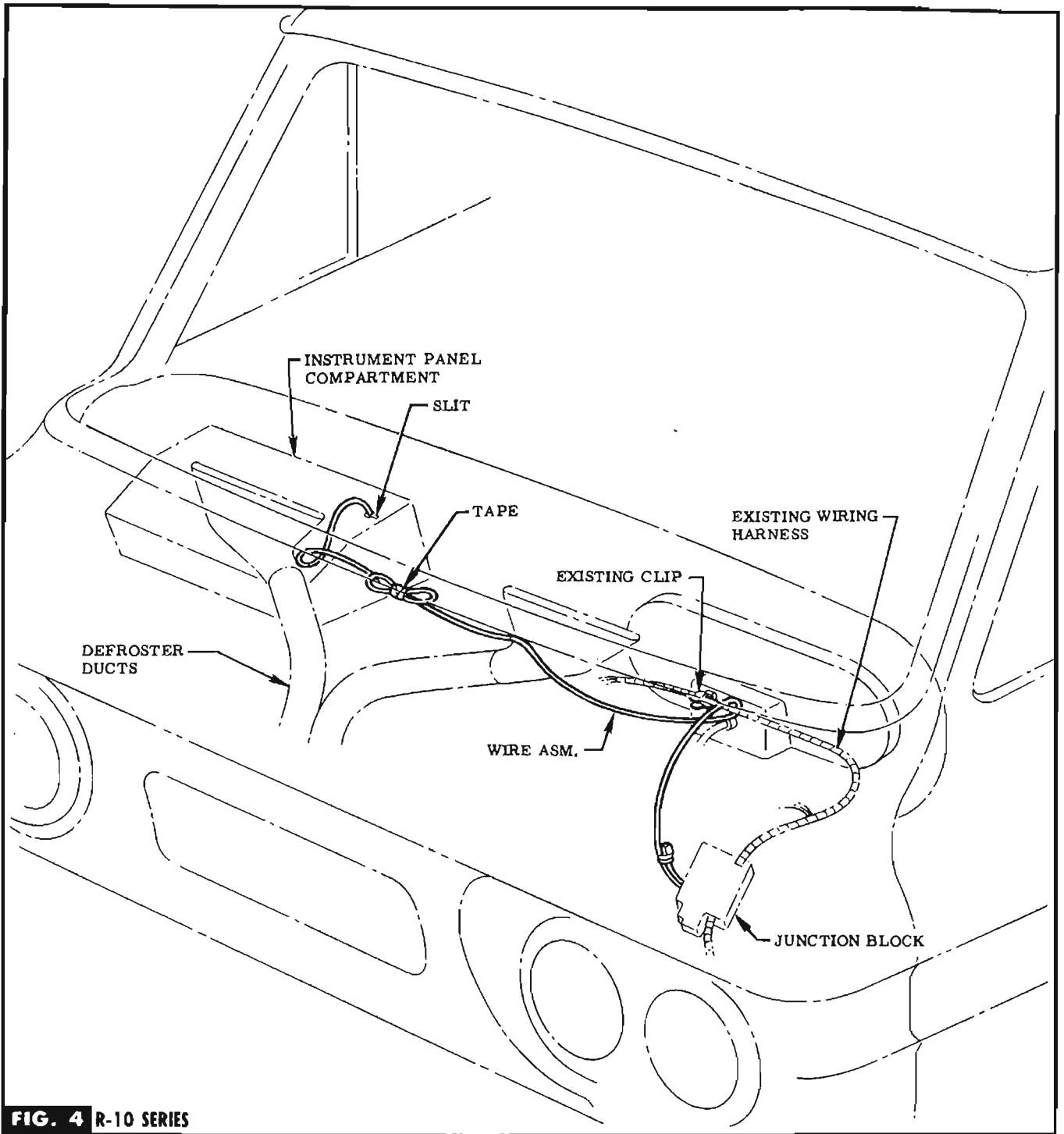


FIG. 4 R-10 SERIES

STEP 1c ROUTE WIRE TERMINAL THRU SLIT IN UPPER LEFT HAND CORNER OF INSTRUMENT PANEL COMPARTMENT & THRU HOLE IN UPPER LEFT SIDE OF COMPARTMENT OPENING. SEE FIG. 4 & VIEW C, FIG. 2.

STEP 2c ASSEMBLE WIRE TERMINAL TO SWITCH. INSERT LAMP & PRESS SWITCH INTO POSITION. SEE VIEW C, FIG. 2.

STEP 3c ROUTE WIRE TO JUNCTION BOX BY LOOPING AROUND RIGHT HAND DEFROSTER DUCT, PASS OVER LEFT HAND DEFROSTER DUCT, LOOP AROUND EXISTING WIRING

HARNESS ALONG SIDE OF EXISTING CLIP. SEE FIG. 4.

STEP 4c PRESS CLIP & BLADE INTO RECEPTACLE MARKED "GL. BOX LP.", INSERT FUSE & CONNECT WIRE. SEE VIEW D, FIG. 2. **NOTE** If receptacle is occupied, remove existing wire & connect to jumper wire. Discard clip & blade asm. & fuse.

STEP 5c LOOP & TAPE EXCESS WIRE. SEE FIG. 4.

NOTE Discard clips provided. They are for other models.